

SCULPTURED FORMS In the round

Descrizione









Moquette in quadrte autoposanti Tufted Bouclé. WellBAC® Comfort Plus con supporto riciclato al 95%. Sistema backing premium. Disponibile con TractionBack® su richiesta.

Traffico

Elevato.

Composizione

100% Thrive® matter (prodotto nylon tinto in massa più rispettoso dell'ambiente) con resina riciclata al 100%.

Caratteristiche generali	Descrizione
Altezza filato	± 3,1 mm
Numero punti	203,150 mq
Altezza totale	± 10,5 mm
Peso della felpa	± 655 g/mq
Scartamento	47,2 per 10 cm
Peso totale	± 4.300 g/mq
Misura	cm 50 x 50
Sottofondo standard	WellBAC™ Comfort 95% materiale riciclato, disponibile con TractionBack a richiesta.
Carica elettrostatica	ISO 6356 ≤ 2,0 KV
Test sedia a rotelle	BS EN 985:2001 Classe A (uso continuo) (r value ≥ 2,4)
Comportamento di reazione al fuoco	EN 13501:1-2018 classe Bfl s1
Classificazione Europea	EN 1307 33 – commerciale elevato
Riduzione al rumore d'urto Assorbimento acustico	ISO 10140-3 34 dB ΔLw ISO 354 0,30 Classe D
Quadrotte per scatola	18 per 4,5 mq
Anni garanzia	15
Dati Ambientali	      
Installazione consigliata	 Posa Monolitico



SCULPTURED FORMS High Relief

Descrizione





Moquette in quadrte autoposanti Tufted Bouclé. WellBAC® Comfort Plus con supporto riciclato al 95%. Sistema backing premium. Disponibile con TractionBack® su richiesta.

Traffico

Elevato.

Composizione

100% Thrive® matter (prodotto nylon tinto in massa più rispettoso dell'ambiente) con resina riciclata al 100%.

Caratteristiche generali	Descrizione
Altezza filato	± 3,1 mm
Numero punti	203,150 mq
Altezza totale	± 10,5 mm
Peso della felpa	± 595 g/mq
Scartamento	47,2 per 10 cm
Peso totale	± 4.300 g/mq
Misura	cm 50 x 50
Sottofondo standard	WellBAC™ Comfort 95% materiale riciclato, disponibile con TractionBack a richiesta.
Carica elettrostatica	ISO 6356 ≤ 2,0 KV
Test sedia a rotelle	BS EN 985:2001 Classe A (uso continuo) (r value ≥ 2,4)
Comportamento di reazione al fuoco	EN 13501:1-2018 classe Bfl s1
Classificazione Europea	EN 1307 33 – commerciale elevato
Riduzione al rumore d'urto Assorbimento acustico	ISO 10140-3 34 dB ΔLw ISO 354 0,30 Classe D
Quadrotte per scatola	18 per 4,5 mq
Anni garanzia	15
Dati Ambientali	      
Installazione consigliata	 Posa Monolitico



HIGH RELIEF

IN THE ROUND



HRF48-120 Carve



HRF235-44 Layered



ITR48-120 Carve



ITR235-44 Layered



HRF220-235 Impress



HRF121-176 Structure



ITR220-235 Impress



ITR121-176 Structure



HRF211-210 Transform



ITR211-210 Transform

HIGH RELIEF

IN THE ROUND



HRF138-264 Profile



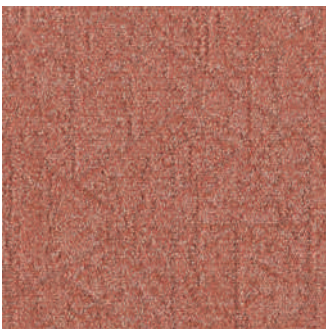
HRF236-179 Make



ITR138-264 Profile



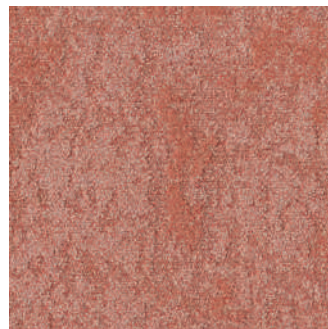
ITR236-179 Make



HRF146-70 Intricate



HRF220-236 Refine



ITR146-70 Intricate



ITR220-236 Refine



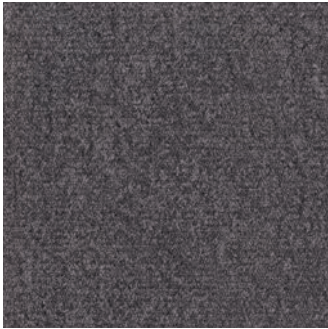
HRF215-144 Movement



ITR215-144 Movement

HIGH RELIEF

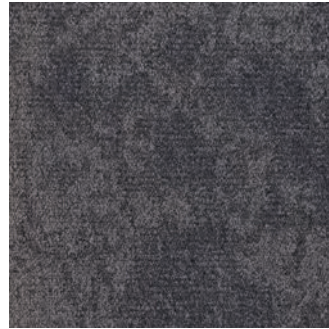
IN THE ROUND



HRF67-133 Inscribe



HRF13-27 Model



ITR67-133 Inscribe



ITR13-27 Model



HRF153-119 Dimension



HRF153-154 Etch



ITR153-119 Dimension



ITR153-154 Etch



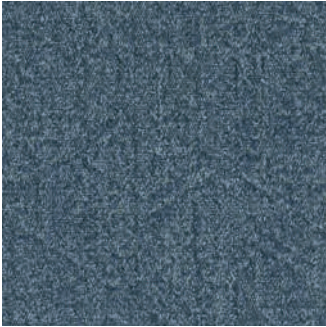
HRF6-13 Engrave



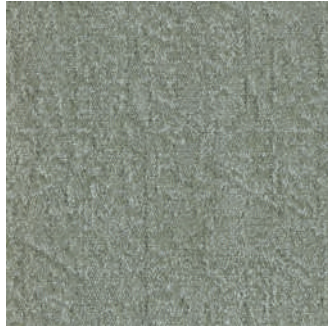
ITR6-13 Engrave

HIGH RELIEF

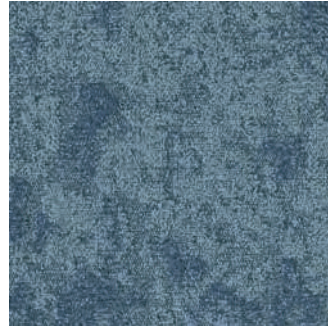
IN THE ROUND



HRF139-245 Shift



HRF241-240 Evolve



ITR139-245 Shift



ITR241-240 Evolve



HRF6-152 Marked



HRF6-158 Groove



ITR6-152 Marked



ITR6-158 Groove



HRF215-6 Flow



ITR215-6 Flow