

NORTHWARD BOUND 2.0 Firn / Glacier

Descrizione








Moquette in quadrte autoposanti Tufted Bouclé, Contenuto riciclato al 90%. WellBAC® Comfort Lite con supporto riciclato al 95%. Sistema backing standard. Disponibile con TractionBack® su richiesta.

Traffico

Elevato.

Composizione

Solution Dyed Nylon. 100% Thrive® matter (prodotto nylon tinto in massa più rispettoso dell'ambiente) con resina riciclata al 100%.

Caratteristiche generali	Descrizione
Altezza filato	± 3,1 mm
Numero punti	185,197 mq
Altezza totale	± 8,8 mm
Peso della felpa	± 580 g/mq
Scartamento	47,2 per 10 cm
Peso totale	± 4.100 g/mq
Misura	cm 50 x 50
Sottofondo standard	WellBAC™ Comfort 95% materiale riciclato, backing standard disponibile con TractionBack a richiesta.
Carica elettrostatica	ISO 6356 ≤ 2,0 KV
Test sedia a rotelle	BS EN 985:2001 Classe A (uso continuo) (r value ≥ 2,4)
Comportamento di reazione al fuoco	EN 13501:1-2018 classe Bfl s1
Classificazione Europea	EN 1307 33 – commerciale elevato
Riduzione al rumore d'urto Assorbimento acustico	ISO 10140-3 30 dB ΔLw ISO 354 0,30 Classe D
Quadrotte per scatola	22 per 5,5 mq
Anni garanzia	15
Dati Ambientali	      
Installazione consigliata	 Posa Monolitico



NORTHWARD BOUND 2.0 Snow

Descrizione








Moquette in quadrte autoposanti Tufted Bouclé, Contenuto riciclato al 90%. WellBAC® Comfort Lite con supporto riciclato al 95%. Sistema backing standard. Disponibile con TractionBack® su richiesta.

Traffico

Elevato.

Composizione

Solution Dyed Nylon. 100% Thrive® matter (prodotto nylon tinto in massa più rispettoso dell'ambiente) con resina riciclata al 100%.

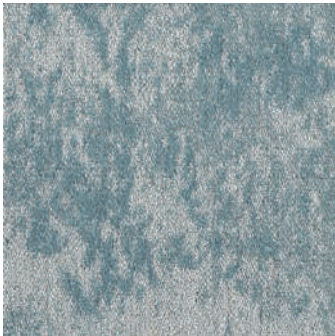
Caratteristiche generali	Descrizione
Altezza filato	± 3,1 mm
Numero punti	185,197 mq
Altezza totale	± 9,1 mm
Peso della felpa	± 560 g/mq
Scartamento	47,2 per 10 cm
Peso totale	± 4.100 g/mq
Misura	cm 50 x 50
Sottofondo standard	WellBAC™ Comfort 95% materiale riciclato, backing standard disponibile con TractionBack a richiesta.
Carica elettrostatica	ISO 6356 ≤ 2,0 KV
Test sedia a rotelle	BS EN 985:2001 Classe A (uso continuo) (r value ≥ 2,4)
Comportamento di reazione al fuoco	EN 13501:1-2018 classe Bfl s1
Classificazione Europea	EN 1307 33 – commerciale elevato
Riduzione al rumore d'urto Assorbimento acustico	ISO 10140-3 30 dB ΔLw ISO 354 0,30 Classe D
Quadrotte per scatola	22 per 5,5 mq
Anni garanzia	15
Dati Ambientali	      
Installazione consigliata	 Posa Monolitico



SNOW



SNO139-245 Seek



SNO245-250 Wanderer



SNO199-245 Communicate



SNO180-106 Endurance

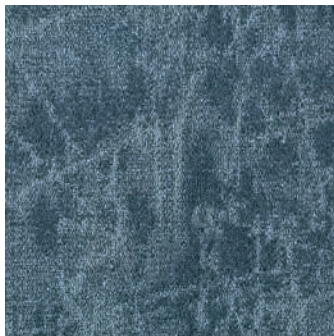
GLACIER



GLA139-245 Seek



GLA245-250 Wanderer



GLA199-245 Communicate



GLA180-106 Endurance

FIRN



FIR139-245 Seek



FIR245-250 Wanderer



FIR199-245 Communicate



FIR180-106 Endurance



SNOW



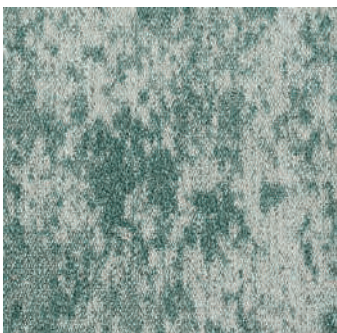
SNO48-64 Odyssey



SNO241-240 Track



SNO203-241 Itinerary

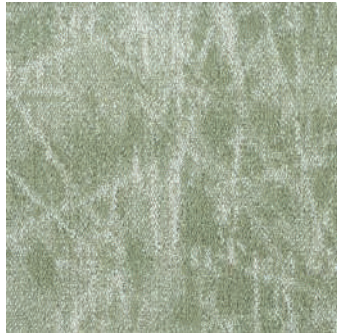


SNO274-241 Survey

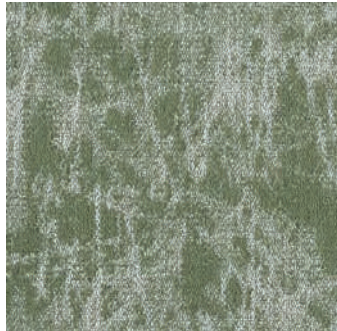
GLACIER



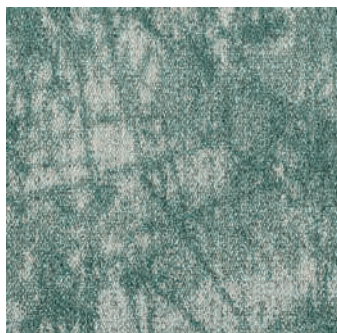
GLA48-64 Odyssey



GLA241-240 Track



GLA203-241 Itinerary



GLA274-241 Survey

FIRN



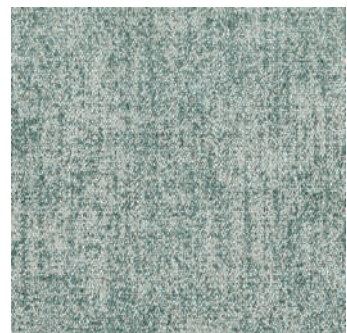
FIR48-64 Odyssey



FIR241-240 Track



FIR203-241 Itinerary



FIR274-241 Survey



SNOW



SNO211-210 Pursuit

GLACIER



GLA211-210 Pursuit

FIRN



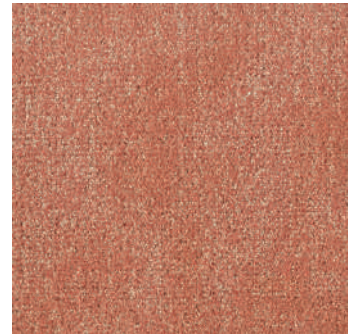
FIR211-210 Pursuit



SNO146-70 Experience



GLA146-70 Experience



FIR146-70 Experience



SNO220-236 Camp



GLA220-236 Camp



FIR220-236 Camp



SNO143-174 Excursion



GLA143-174 Excursion



FIR143-174 Excursion



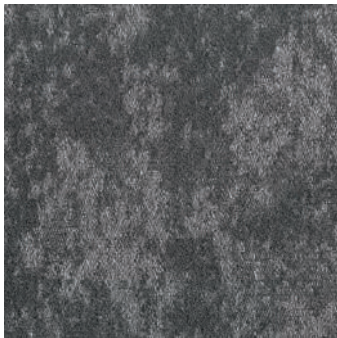
SNOW



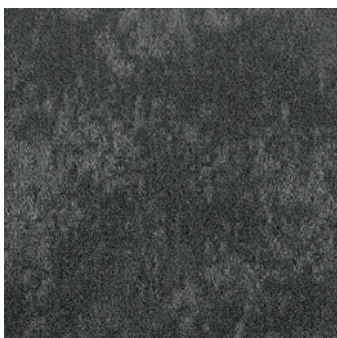
SNO250-174 Plan



SNO250-152 Encountered



SNO153-174 Navigate



SNO174-27 Travel

GLACIER



GLA250-174 Plan



GLA250-152 Encountered



GLA153-174 Navigate



GLA174-27 Travel

FIRN



FIR250-174 Plan



FIR250-152 Encountered



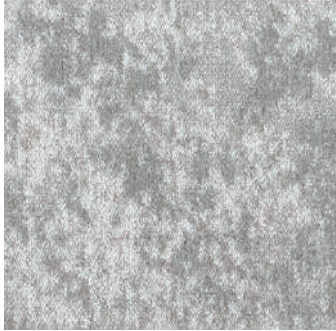
FIR153-174 Navigate



FIR174-27 Travel



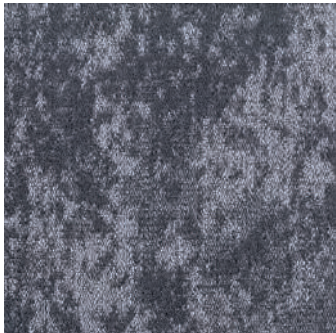
SNOW



SNO108-215 Mapping



SNO138-250 Climb

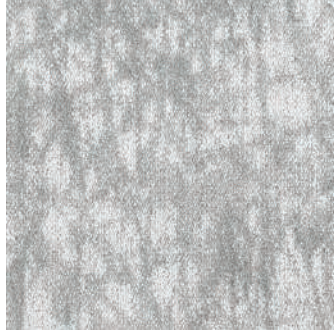


SNO138-264 Search



SNO248-249 Challenge

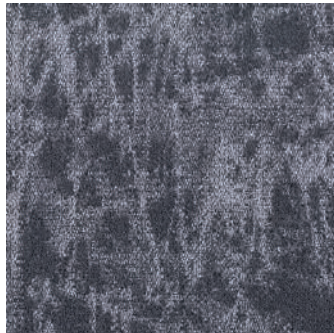
GLACIER



GLA108-215 Mapping



GLA138-250 Climb



GLA138-264 Search



GLA248-249 Challenge

FIRN



FIR108-215 Mapping



FIR138-250 Climb



FIR138-264 Search



FIR248-249 Challenge



SNOW



SNO144-6 Exploration



SNO250-83 Expedition



SNO212-254 Hike



SNO213-120 Guide

GLACIER



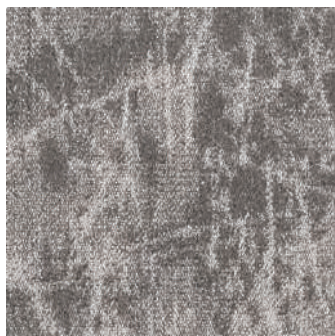
GLA144-6 Exploration



GLA250-83 Expedition



GLA212-254 Hike



GLA213-120 Guide

FIRN



FIR144-6 Exploration



FIR250-83 Expedition



FIR212-254 Hike



FIR213-120 Guide

