



SUPERFICI CREATIVE

# EXPONA®



# FLOW

DESIGN LED CONTINUOUS VINYL FLOORING ©

## »» Premium Heterogeneous Vinyl for Commercial Interiors

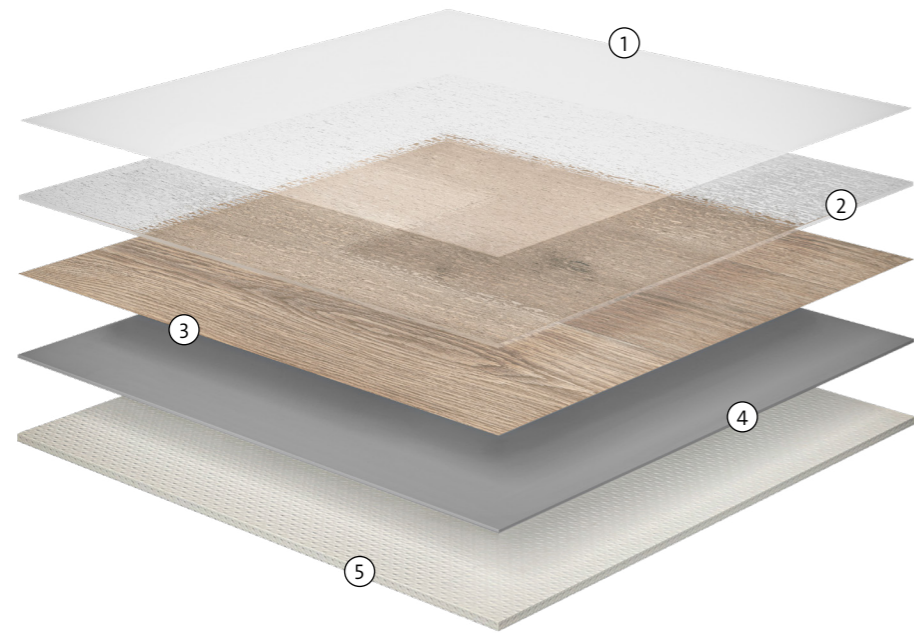
When designing an interior space, the floor covering serves as the foundation upon which every other element is built. It not only defines the aesthetic of the room, but also influences the overall atmosphere, comfort and functionality.

EXPONA FLOW captivates and impresses with its boundless design spectrum, ensuring suitability for both private and commercial spaces. Thanks to its dynamic designs, the heterogeneous flooring not only offers visual variety, but versatile, durable and sophisticated solutions - seamlessly blending design concepts whilst ensuring long-lasting performance, which can easily withstand the demands of everyday life.

Explore infinite design floor possibilities with 'ready to roll' design floor solutions. The collection now includes 3 large plank designs, each with a matching parquet counterpart. These versatile designs work effortlessly as standalone floors or when laid together to create natural zones and walkways within interiors.

# Continuous Heterogeneous Vinyl

## Composition Breakdown



**① PUR Finish**  
EXPONA FLOW incorporates a polyurethane reinforcement (PUR) surface layer which protects and shields the product. Combined with the superior closed surface finish, this enhanced protection allows the use of a polish-free maintenance regime.

**③ Decoration Layer**  
The decoration layer is responsible for the floor's aesthetic appearance and makes heterogeneous flooring a versatile choice for varying interior design schemes. The innovative printing technique enables a wide range of design options and styles, from natural wood effect to contemporary stone or unique abstract designs.

**⑤ Load Bearing Layer**  
The high-density compact backing layer is a vital component to the heterogeneous structure as it provides the necessary strength, support and protection. Moreover, the floor covering remains stable, durable and capable of handling heavy loads and impact without compromising performance.

**② Wear Layer**  
The 0.7mm commercial grade transparent wear layer is extremely dense, hard wearing and its key function is to protect the printed decorative layer. This layer also allows the surface embossing to create highly authentic wood grain, pitted stone or smooth effects.

**④ Stabilization Layer**  
This integral layer improves the product's dimensional stability and minimizes the effect of surrounding physical properties, for example fluctuating temperature and humidity. The stabilisation layer ensures the floor covering remains flat and stable for the product's life cycle.

### Creative Colour Selection

**44 Designs**  
Parquet, wood, concrete, terrazzo and seamless effects

**44 Weld Rods**  
colour matched

**2 x 20m Sheet Flooring**

**0.7mm Wear Layer**  
Designed for commercial interiors

**PUR Easy Clean**  
Lifetime polish free

### Responsible Flooring

**UK Manufactured**

**100% Recyclable**  
through Recofloor Vinyl Take-Back scheme

**Recycled Content**  
contains up to 10% recycled content

**Low VOC's**  
Indoor Air Comfort Gold





**HERRINGBONE**  
p.8



**CHEVRON**  
p.16



**BASKET WEAVE**  
p.12



**INFINITY**  
p.20

Introducing design floors, ready to roll in an effortless sheet format. Developed to spark the imagination, these unique designs work beautifully as stand-alone floors, and are equally impressive when laid with compatible designs to create natural zones and pathways. Creating unique and attractive design floors has never been easier.

**FLOW**

**DESIGN FLOORS**



# HERRINGBONE

2 x 20m = 40m<sup>2</sup>



**9678 Serene Oak Parquet \***  
w/r 9678



Pattern Size: 88 x 700mm



**9679 Upland Oak Parquet \***  
w/r 9679



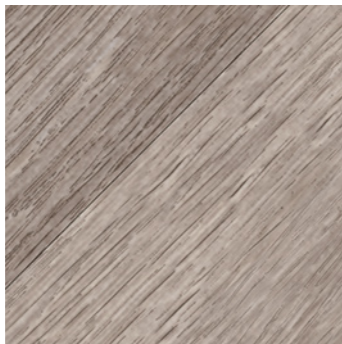
Pattern Size: 88 x 700mm



**9677 Eden Oak Parquet \***  
w/r 9677



Pattern Size: 88 x 700mm



\* Shade also available in Pattern Size: 200 x 1500mm





9679 Upland Oak Parquet



# BASKET WEAVE

2 x 20m = 40m<sup>2</sup>



**9681 Classic Basket Weave**  
w/r 9681

**9682 Antique Basket Weave**  
w/r 9682

Pattern Size: 56 x 297mm & 120 x 120mm

Pattern Size: 56 x 297mm & 120 x 120mm





9682 Antique Basket Weave & 9840 Oatmeal



# CHEVRON

2 x 20m = 40m<sup>2</sup>



**9683 Grey Archer Oak**  
w/r 9683

Pattern Size: 100 x 333mm



**9684 Tan Archer Oak**  
w/r 9684

Pattern Size: 100 x 333mm





CHILL

CH

# INFINITY

2 x 20m = 40m<sup>2</sup>



**9864 Autumn Rain**  
w/r 9864



**9869 Honey Beige**  
w/r 9869





**ASH**  
p.30



**COOL**  
p.32



**WARM**  
p.28



**WARM**  
p.24

Sympathetically portraying the natural beauty of timber, Expona Flow offers contemporary and creative wood plank designs to create a varied and authentic palette. Combining realistic wood grain, rich textures, and varying plank widths, the versatility of Expona Flow wood designs complement a wide range of interior styles and use areas from refined minimalism to more traditional or rustic aesthetics.

# WOOD

# FLOW



# WARM WOOD

2 x 20m = 40m<sup>2</sup>



**9673 Serene Oak \***  
w/r 9673



**9674 Bracken Oak**  
w/r 9674



**9671 Eden Oak \***  
w/r 9671



Pattern Size: 200 x 1500mm



Pattern Size: 200 x 1500mm



\* Shade also available in Pattern Size: 88 x 700mm





9673 Serene Oak



# WARM WOOD

2 x 20m = 40m<sup>2</sup>



**9820 Blond Oak**  
w/r 9820

Pattern Size: 167 x 1500mm



**9823 English Oak**  
w/r 9823

Pattern Size: 200 x 1500mm



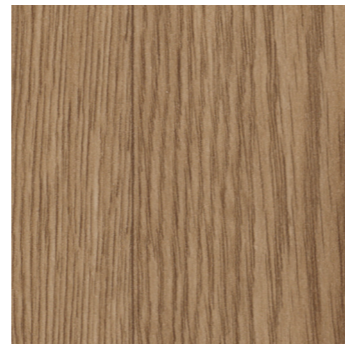
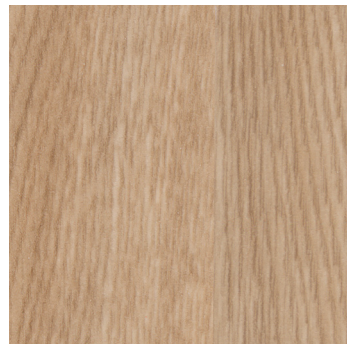
**9821 Honey Oak**  
w/r 9821

Pattern Size: 167 x 1500mm



**9822 Toasted Oak**  
w/r 9822

Pattern Size: 167 x 1500mm



# ASH

2 x 20m = 40m<sup>2</sup>



**9833 Classic Limed Ash**  
w/r 9833

Pattern Size: 166 x 1500mm



**9832 Warm Limed Ash**  
w/r 9832

Pattern Size: 166 x 1500mm



**9831 Roasted Limed Ash**  
w/r 9831

Pattern Size: 166 x 1500mm



# COOL WOOD

2 x 20m = 40m<sup>2</sup>



9675 Upland Oak \*  
w/r 9675

Pattern Size: 200 x 1500mm



9676 Borough Oak  
w/r 9676

Pattern Size: 200 x 1500mm



9672 Ridge Oak  
w/r 9672

Pattern Size: 200 x 1500mm



\* Shade also available in Pattern Size: 88 x 700mm





9676 Borough Oak



# COOL WOOD

2 x 20m = 40m<sup>2</sup>



**9825 Sun Bleached Oak**  
w/r 9825

Pattern Size: 200 x 1500mm



**9826 Silver Oak**  
w/r 9826

Pattern Size: 200 x 1500mm



**9827 Smoked Oak**  
w/r 9827

Pattern Size: 200 x 1500mm





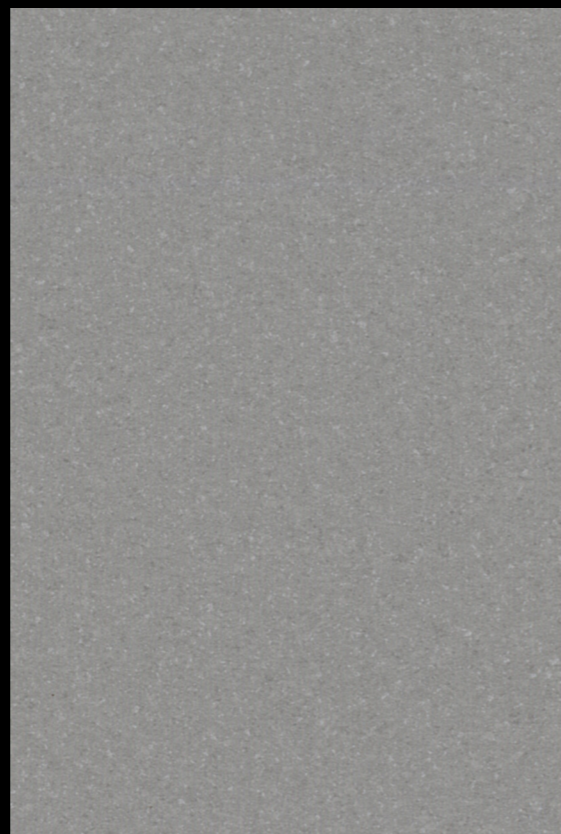
**TERRAZZO**  
p.52



**CEMENT**  
p.40



**CONCRETE**  
p.44



**COSMOS**  
p.56

For those interiors seeking a sleek, industrial aesthetic, the Expona Flow stone collection includes an extensive selection of concrete and cement designs. Soft grey tones highlight a sense of spaciousness, making them the ideal choice for large commercial locations. Laid individually or together in harmony, the raw look of concrete exudes a sense of urban sophistication, making it a popular choice in contemporary and industrial-style interiors.

# STONE

# FLOW



# CEMENT

2 x 20m = 40m<sup>2</sup>



**9685 Dove Cement**  
w/r 9685



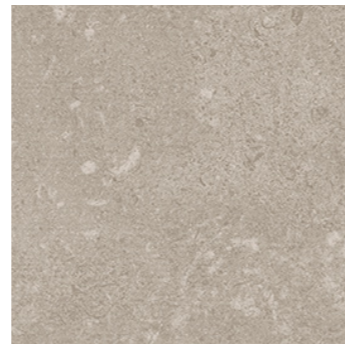
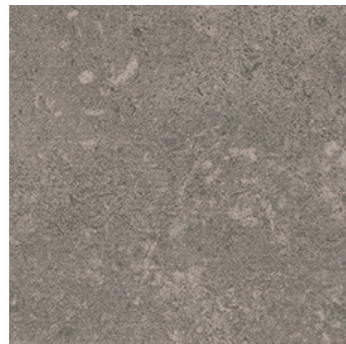
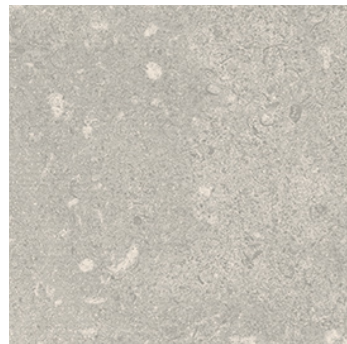
**9686 Pewter Cement**  
w/r 9686



**9687 Chalk Cement**  
w/r 9687



**9688 Sepia Cement**  
w/r 9688





# CONCRETE

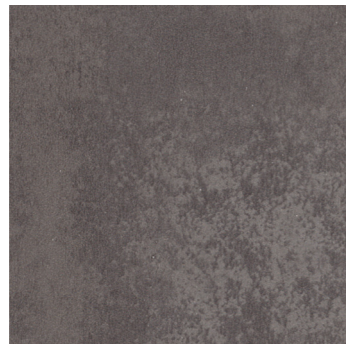
2 x 20m = 40m<sup>2</sup>



**9855 Warm Concrete**  
w/r 9855



**9857 Dark Grey Concrete**  
w/r 9857





RECEPTION

# CONCRETE

2 x 20m = 40m<sup>2</sup>



9856 Cool Concrete  
w/r 9856



9858 Light Grey Concrete  
w/r 9858



# CONCRETE

2 x 20m = 40m<sup>2</sup>



**9859 Dark Industrial Concrete**  
w/r 9859



**9860 Light Industrial Concrete**  
w/r 9860



**9861 Copper Ornamental**  
w/r 9861



# TERRAZZO

2 x 20m = 40m<sup>2</sup>



9693 Oyster  
w/r 9693



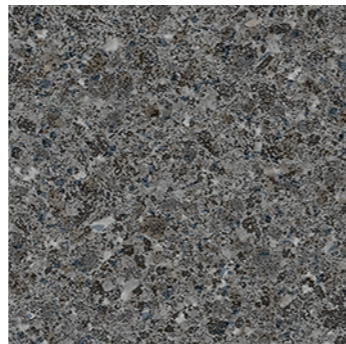
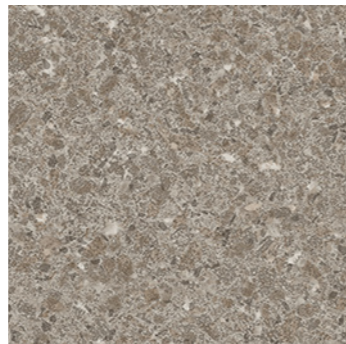
9692 Marlstone  
w/r 9692



9691 Pebble  
w/r 9691



9689 Starlight  
w/r 9689





9693 Oyster



2 x 20m = 40m<sup>2</sup>



9845 Storm  
w/r 9845



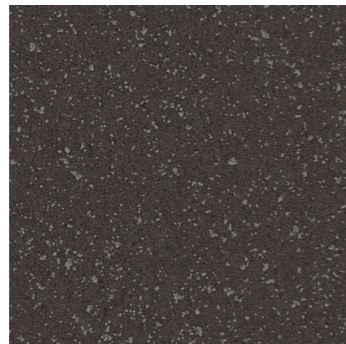
9842 Jet  
w/r 9842



9841 Moleskin  
w/r 9841




9840 Oatmeal  
w/r 9840





9840 Oatmeal






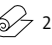
**>>** View the collection  
**at a glance**

The following pages provide a condensed overview of the extensive Expona Flow collection, featuring accurate product scans, details of the varying plank sizes between designs, as well as vinyl roll size and total m<sup>2</sup> coverage.

The entire collection has been defined into design groups for easy navigation, so depending on the desired interior aesthetic, a suitable design can be easily selected.

# WOOD PLANK

 2 x 20m = 40m<sup>2</sup>

 2 x 20m = 40m<sup>2</sup>

Pattern Size: ▲ 200x1500mm ■ 167x1500mm ● 166x1500mm



**9820 Blond Oak**  
w/r 9820



**9821 Honey Oak**  
w/r 9821



**9822 Toasted Oak**  
w/r 9822



**9823 English Oak**  
w/r 9823



**9672 Ridge Oak**  
w/r 9672



**9674 Bracken Oak**  
w/r 9674



**9676 Borough Oak**  
w/r 9676



**9673 Serene Oak**  
w/r 9673



**9833 Classic Limed Ash**  
w/r 9833



**9831 Roasted Limed Ash**  
w/r 9831



**9832 Warm Limed Ash**  
w/r 9832



**9671 Eden Oak**  
w/r 9671



**9825 Sun Bleached Oak**  
w/r 9825



**9675 Upland Oak**  
w/r 9675



**9826 Silver Oak**  
w/r 9826



**9827 Smoked Oak**  
w/r 9827

# HERRINGBONE

2 x 20m = 40m<sup>2</sup>  
Pattern Size: 88 x 700mm



9678 Serene Oak Parquet  
w/r 9678

p.10



9677 Eden Oak Parquet  
w/r 9677

p.9



9679 Upland Oak Parquet  
w/r 9679

p.11



# MATCHING PLANK

2 x 20m = 40m<sup>2</sup>  
Pattern Size: 200 x 1500mm



9673 Serene Oak  
w/r 9673

p.27



9671 Eden Oak  
w/r 9671

p.25



9675 Upland Oak  
w/r 9675

p.33

# BASKET WEAVE

2 x 20m = 40m<sup>2</sup>  
Pattern Size: 56 x 297mm & 120 x 120mm



9681 Classic Basket Weave  
w/r 9681

p.13



9682 Antique Basket Weave  
w/r 9682

p.14



# CHEVRON

2 x 20m = 40m<sup>2</sup>  
Pattern Size: 100 x 333mm



9683 Grey Archer Oak  
w/r 9683

p.18




9684 Tan Archer Oak  
w/r 9684

p.17



# CONCRETE

 2 x 20m = 40m<sup>2</sup>



**9858 Light Grey Concrete** p.49  
w/r 9858



**9855 Warm Concrete** p.45  
w/r 9855

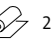


**9856 Cool Concrete** p.49  
w/r 9856



**9857 Dark Grey Concrete** p.54  
w/r 9857

# CEMENT

 2 x 20m = 40m<sup>2</sup>



**9687 Chalk Cement** p.42  
w/r 9687



**9685 Dove Cement** p.42  
w/r 9685

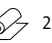


**9688 Sepia Cement** p.41  
w/r 9688



**9686 Pewter Cement** p.41  
w/r 9686

# TERRAZZO

 2 x 20m = 40m<sup>2</sup>



**9860 Light Industrial Concrete** p.51  
w/r 9860



**9859 Dark Industrial Concrete** p.50  
w/r 9859



**9861 Copper Ornamental** p.50  
w/r 9861

VISUALISE  
IN YOUR  
INSTALLATION



**9693 Oyster** p.55  
w/r 9693



**9692 Marlstone** p.53  
w/r 9692



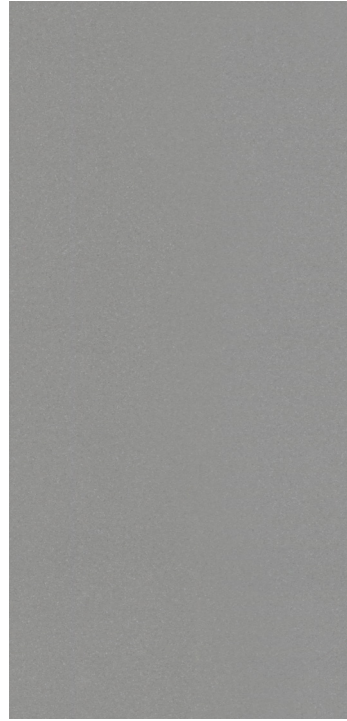
**9691 Pebble** p.54  
w/r 9691



**9689 Starlight** p.53  
w/r 9689

# COSMOS

2 x 20m = 40m<sup>2</sup>



9845 Storm  
w/r 9845

p.58



9842 Jet  
w/r 9842

p.58



9840 Oatmeal  
w/r 9840

p.59



9841 Moleskin  
w/r 9841

p.57

# INFINITY

2 x 20m = 40m<sup>2</sup>



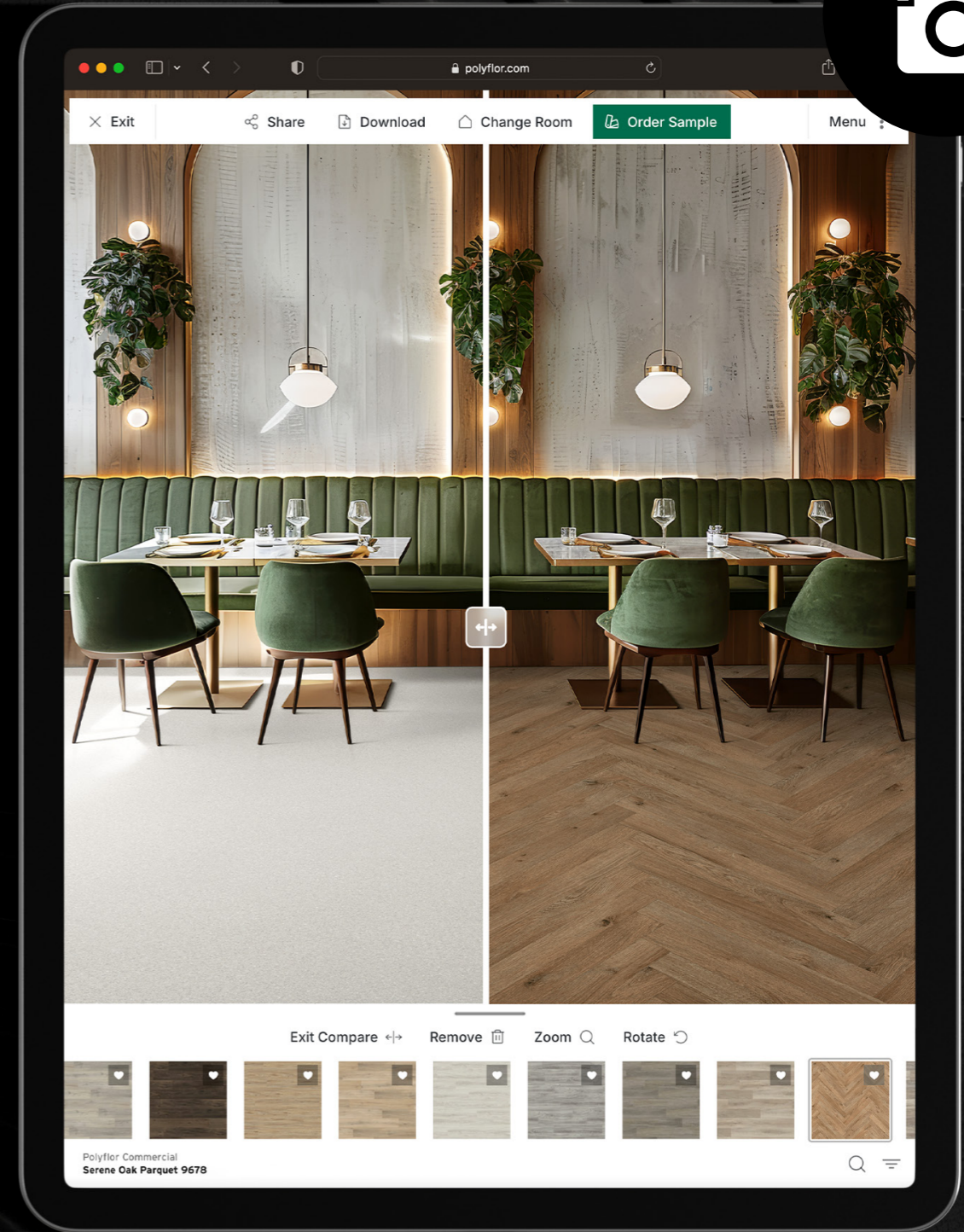
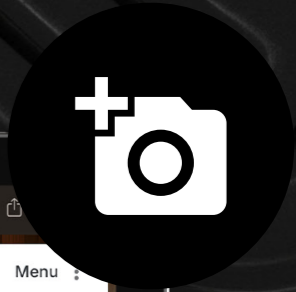
9864 Autumn Rain  
w/r 9864

p.21



9869 Honey Beige  
w/r 9869

p.20



Explore and compare design options with our online visualiser

# PICTURE INSTANTLY



# TECHNICAL SPECIFICATION

| Product Format | Standard           | Result               |
|----------------|--------------------|----------------------|
| Gauge          | ISO 24346 (EN 428) | 2.0mm                |
| Wear Layer     | ISO 24340 (EN 429) | 0.70mm               |
| Total Weight   | ISO 23997 (EN 430) | 2660g/m <sup>2</sup> |
| Finish         |                    | PUR                  |

| Sheet Size | Size & Coverage per Roll    | Shades |
|------------|-----------------------------|--------|
| Sheet      | 2m x 20m = 40m <sup>2</sup> | 44     |

| Performance Requirements      | Standard  | Result   |
|-------------------------------|---|--|
| General Performance           | ISO 10582 (EN 649)<br>ASTM F1303  | Conforms<br>Type I, Grade I, Class B Backing                             |
| Use Area                      | ISO 10874 (EN 685)  | 23, 34, 43   |
| Slip Resistance               | EN 13893<br>DIN 51130 / DIN EN 16165 Ann. B<br>AS 4586 Appendix D<br>ASTM D2047 | Class D5<br>R10<br>R10<br>SCOF ≥0.5                                      |
| Binder Content                | ISO 10582   | Type I   |
| Abrasion Resistance           | EN 649  | Group T  |
| Reaction to Fire              | EN 13501-1<br>ASTM E648<br>AS ISO 9239.1<br>CAN/ULC S-102.2                     | Class Bfl-S1<br>Class 1<br>>8.0kW/m <sup>2</sup><br>FSV < 300; SDV < 500 |
| Static Electrical Propensity  | EN 1815   | ≤2.0kV Classified as 'antistatic'  |
| Residual Indentation          | ASTM F1914<br>ASTM F970 (Modified)<br>ISO 24343-1                               | ≤0.005"<br>≤0.005" (750psi)<br>≤0.10mm                                   |
| Castor Chair (continuous use) | ISO 4918 (EN 425)   | Suitable   |
| Dimensional Stability         | ISO 23999 (EN 434)  | ≤0.40%   |
| Flexibility                   | ISO 24344 (EN 435)<br>ASTM F137   | (Method A) Pass 20mm ø<br>0.25" Pass                                     |
| Underfloor Heating            |   | Suitable, max 27°C   |
| Light Fastness                | ISO 105-B02 (Method 3)  | ≥6   |
| Resistance to Light           | ASTM F1515  | ΔE ≤ 8.0 - Meets   |
| Resistance to Heat            | ASTM F1514  | ΔE ≤ 8.0 - Meets   |

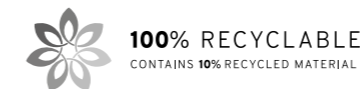
| Sustainability          | Standard           | Result                     |
|-------------------------|--------------------|----------------------------|
| GreenTag                | LCA Rate Gold Plus | GreenRate level A          |
| Specific EN 15804 EPD   |                    | Available                  |
| Recyclable              |                    | 100%                       |
| Recycled Content        |                    | 10%                        |
| REACH                   |                    | Compliant                  |
| Indoor Air Comfort Gold |                    | Eurofins certified product |
| FloorScore              |                    | Certified                  |
| Finnish M1              |                    | Certified                  |
| AgBB/ABG                |                    | Pass                       |
| Responsible Sourcing    | BES 6001           | Excellent                  |

| Acoustic Performance   | Standard    | Result |
|------------------------|-------------|--------|
| Impact Sound Reduction | ISO 10140-3 | 8dB    |

| Maintenance Performance | Standard                        | Result                             |
|-------------------------|---------------------------------|------------------------------------|
| Resistance to Chemicals | ISO 26987 (EN 423)<br>ASTM F925 | Good resistance<br>Good resistance |

All Polyflor commercial sheet vinyl ranges provide a continuous, impervious and hygienic flooring solution which can be confidently cleaned in accordance with recommended maintenance procedures and approved maintenance products. The implementation of an effective cleaning regime is the most important defence against infection.

| Hygiene              | Standard       | Result                 |
|----------------------|----------------|------------------------|
| Bacterial Resistance | ISO 846 Part C | Does not favour growth |



# SUSTAINABILITY

As a leading global manufacturer of high-quality, high-performance sustainable floor coverings, Polyflor has demonstrated a significant level of commitment to minimising environmental impact. This meets the company's values, but also complies with ongoing objectives for ISO 14001 Environmental Management System and BES 6001 Responsible Sourcing accreditation.

Expona Flow is 100% recyclable, whilst also containing up to 10% recycled material. It contains 52% natural material, is phthalate free and REACH compliant. Expona Flow is extremely durable with its 0.7mm protective wear layer and PUR finish, and promotes a 10 year commercial guarantee. Easily cleaned with fewer chemicals, less water, and less energy, it is also non-shedding and does not harbour dust – important for clean air quality.

Furthermore, Expona Flow achieves Indoor Air Comfort Gold and FloorScore certification for exceptionally low VOC emissions, providing indoor air quality and comfort. In support of sustainable construction, particularly with regards to LEED, WELL, SKA and Green Star projects, Polyflor has a Product Specific EPD (Environmental Product Declaration) and BRE LCA to assist.

For more information on our sustainability credentials, go to [www.polyflor.com](http://www.polyflor.com)



# SUPPORT

## ORDER SAMPLES

Polyflor provides a complementary product sample service so you can sample your choice of flooring before you make your final selection, and ensure you find the exact floorcovering you are looking for. To order your free sample of any Expona Flow colour, visit the Polyflor website, call the dedicated Polyflor Samples Hotline on **+44 (0) 161 767 2551** or speak with your local Polyflor provider.

## CONTACT US

For general information on your specific project, either speak with your local Polyflor provider or contact us directly. If you require additional detailed technical data, either visit [polyflor.com](http://polyflor.com) and follow the links to the technical pages, contact Polyflor Customer Technical Services on **+44 (0) 161 767 1912** or email [tech@polyflor.com](mailto:tech@polyflor.com).

## MAINTENANCE

The incorporation of a polyurethane reinforcement (PUR) into the Expona Flow collection helps to protect the floor covering by resisting soiling and scuffing. Combined with the superior closed surface finish, this enhanced protection allows the use of a polish-free maintenance regime for the lifetime of the flooring. This leads to an overall maintenance cost saving of 48% over a 20+ year life when compared to untreated heterogeneous flooring, and fewer cleaning chemicals and reduced power requirements mean reduced environmental impact.

# PRODUCT INDEX

| Product Reference         | Page Number |
|---------------------------|-------------|
| Antique Basket Weave      | p.14        |
| Autumn Rain               | p.21        |
| Blond Oak                 | p.29        |
| Borough Oak               | p.35        |
| Bracken Oak               | p.26        |
| Chalk Cement              | p.42        |
| Classic Basket Weave      | p.13        |
| Classic Limed Ash         | p.30        |
| Cool Concrete             | p.49        |
| Copper Ornamental         | p.50        |
| Dark Grey Concrete        | p.54        |
| Dark Industrial Concrete  | p.50        |
| Dove Cement               | p.42        |
| Eden Oak                  | p.25        |
| Eden Oak Parquet          | p.9         |
| English Oak               | p.28        |
| Grey Archer Oak           | p.18        |
| Honey Beige               | p.20        |
| Honey Oak                 | p.28        |
| Jet                       | p.58        |
| Light Grey Concrete       | p.49        |
| Light Industrial Concrete | p.51        |
| Marlstone                 | p.53        |
| Moleskin                  | p.57        |
| Oatmeal                   | p.59        |
| Oyster                    | p.55        |
| Pebble                    | p.54        |
| Pewter Cement             | p.41        |
| Ridge Oak                 | p.34        |
| Roasted Limed Ash         | p.30        |
| Sepia Cement              | p.41        |
| Serene Oak                | p.27        |
| Serene Oak Parquet        | p.10        |
| Silver Oak                | p.37        |
| Smoked Oak                | p.37        |
| Starlight                 | p.53        |
| Storm                     | p.58        |
| Sun Bleached Oak          | p.36        |
| Tan Archer Oak            | p.17        |
| Toasted Oak               | p.28        |
| Upland Oak                | p.33        |
| Upland Oak Parquet        | p.11        |
| Warm Concrete             | p.45        |
| Warm Limed Ash            | p.31        |



*James Halstead*  
FLOORING

## POLYFLOR™ INTERNATIONAL

**Australia**  
Polyflor Australia  
Tel: 1800 777 425  
Tel: +61 3 9215 4400  
E-mail: sales@polyflor.com.au  
www.polyflor.com.au

**Canada**  
Polyflor Canada Inc.  
Tel: +1 905 364 3000  
E-mail: sales@polyflor.ca  
www.polyflor.ca

**China**  
Polyflor North Asia Ltd  
Tel: +(852) 2865 0101  
E-mail: info@polyflor.com.hk  
www.polyflor.com.hk

**Colombia**  
Polyflor Ltd (LATAM Office)  
Tel: +57 3142859005  
E-mail: info@polyflor.com  
www.polyflor.com

**France**  
James Halstead France SAS  
Tel: +33 (0)8 20 20 32 11  
Email: info@jhf.france.fr  
www.objectflor.de

**Germany**  
objectflor Art und Design Belags GmbH  
Tel: +49 (0) 2236 966 330  
E-mail: info@objectflor.de  
www.objectflor.de

**India**  
Polyflor India Pvt Ltd.  
Tel: +91 22 4023 2485  
Tel: +91 22 4023 2486  
E-mail: info@polyflor.co.in  
www.polyflor.com

**Ireland**  
Polyflor Ireland  
Tel: +353 (1) 864 9304  
E-mail: salesireland@polyflor.com  
www.polyflor.com

**Malaysia**  
Polyflor Martex  
Tel: 1300 80 7788  
E-mail: sales@polyflor.com.my  
www.polyflor.com.my

**Middle East**  
Polyflor Ltd  
Tel: +971 50 406 8114  
E-mail: info@polyflor.com  
www.polyflor.com

**New Zealand**  
Polyflor New Zealand Ltd.  
Tel: 0800 765 935  
Tel: +64 9 269 1111  
E-mail: sales@polyflor.co.nz  
www.polyflor.co.nz

**Norway**  
Polyflor Nordic  
Tel: +47 23 00 84 00  
E-mail: firmapost@polyflor.no  
www.polyflor.no

**Spain**  
Polyflor Ltd  
Tel: +34 619 949 054  
E-mail: info@polyflor.com  
www.polyflor.com

**Sweden**  
Polyflor Nordic Sweden AB  
Tel: +46 (0) 300 15820  
E-mail: info@polyflor.se  
www.polyflor.se

## POLYFLOR™ UK

Polyflor Ltd, PO Box 3, Radcliffe New Road,  
Whitefield, Manchester, M45 7NR

Tel: +44 (0) 161 767 1111  
E-mail: info@polyflor.com

[www.polyflor.com](http://www.polyflor.com)





[www.polyflor.com](http://www.polyflor.com)