

## PAINTED GARDEN

### Descrizione










Moquette in doghe autoposanti Tufted Bouclé strutturato. Possibilità di customizzazione stampa coi fiori, con tecnologia Millitron®.

### Traffico

Elevato.

### Composizione

Nylon ECONYL® realizzato con nylon riciclato al 100%. 70% di contenuto riciclato sul peso totale del prodotto.

Caratteristiche generali	Descrizione
Altezza filato	± 5,3 mm
Numero punti	207.874 /mq
Altezza totale	± 12,1 mm
Peso della felpa	± 1010 g/mq
Scartamento	47,2 per 10 cm
Peso totale	± 5000 g/mq
Misura	cm 25 x 100
Sottofondo	WellBAC Comfort Plus 90% materiale riciclato, cushion backing disponibile con TractionBack a richiesta
Carica elettrostatica	ISO 6356 ≤ 2,0 KV
Test sedia a rotelle	BS EN 985:2001 Classe A (uso continuo) (r value ≥ 2,4)
Comportamento di reazione al fuoco	EN 13501-1:2018 classe Cfl s1
Classificazione Europea	EN 1307 33 – commerciale elevato
Riduzione al rumore d'urto Assorbimento acustico	ISO 10140-3 <b>37</b> dB ΔLw ISO 354 0,35 Classe D
Doghe per scatola	8 per 2 mq
Anni garanzia	15
Dati Ambientali	       
Installazione consigliata	 Posa a correre o a spina di pesce



## PAINTED GARDEN RETOLD

### Descrizione










Moquette in doghe autoposanti Tufted Bouclé strutturato. Possibilità di customizzazione stampa coi fiori, con tecnologia Millitron®.

### Traffico

Elevato.

### Composizione

Nylon ECONYL® realizzato con nylon riciclato al 100%. 70% di contenuto riciclato sul peso totale del prodotto.

Caratteristiche generali	Descrizione
Altezza filato	± 2,5 mm
Numero punti	207.874 /mq
Altezza totale	± 8,3 mm
Peso della felpa	± 490 g/mq
Scartamento	47,2 per 10 cm
Peso totale	± 4000 g/mq
Misura	cm 25 x 100
Sottofondo	WellBAC Comfort 90% materiale riciclato, cushion backing disponibile con TractionBack a richiesta
Carica elettrostatica	ISO 6356 ≤ 2,0 KV
Test sedia a rotelle	BS EN 985:2001 Classe A (uso continuo) (r value ≥ 2,4)
Comportamento di reazione al fuoco	EN 13501-1:2018 classe Bfl s1
Classificazione Europea	EN 1307 33 – commerciale elevato
Riduzione al rumore d'urto Assorbimento acustico	ISO 10140-3 <b>31</b> dB ΔLw ISO 354 0,25 Classe E
Doghe per scatola	12 per 3 mq
Anni garanzia	12
Dati Ambientali	       
Installazione consigliata	 Posa a correre o a spina di pesce



## SPRING



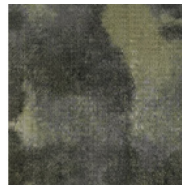
RPG236-218-217  
Bloom



RPG140-245-260  
Morning



RPG159-25-242  
Breeze



RPG74-62  
Botanical



RPG218-202-207  
Seedling



RPG236-218-217  
Bloom

## AUTUMN



RPG204-114-128  
Flowerpot



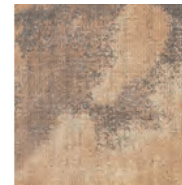
RPG207-254-89  
Arbour



RPG254-60-48  
Ornamental



RPG44-21-219  
Haze

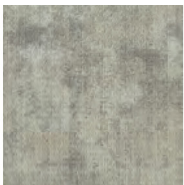


RPG97-221  
Fragrant

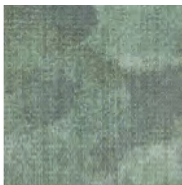


RPG27-13-165  
Loam

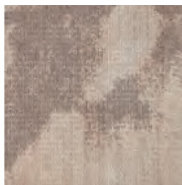
## SUMMER



RPG139-171-217  
Fresh



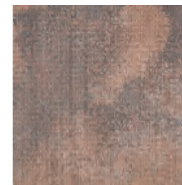
RPG25-260-240  
Jardin



RPG234-236  
Blossom



RPG174-144  
Annual



RPG174-144  
Annual



RPG118-27-5  
Courtyard

## WINTER



RPG59-271-265  
Seasonal



RPG260-106-215  
Hibernate



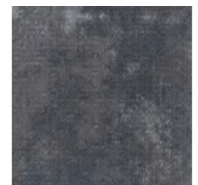
RPG118-153  
Gardener



RPG153-144-215  
Outside



RPG48-180-274  
Calendar



RPG153-260-250  
Cottage





Cow Parsley Overlay



Grasses and Teasles Overlay



Echinacea and Allium Overlay



Before Customisation



After Customisation

